

OCTOBER + NOVEMBER 2024

THE SPARK

10TH
ANNIVERSARY
EDITION

Celebrating

— 10 YEARS —

2014-2024

Southcoast Health and Sustainability Alliance (SHASA) will be celebrating our 10th Anniversary at the Moruya Surf Life Saving Club on Friday 1 November. We're extending an invitation to members of the public who would like to meet the people of SHASA. You'll have the opportunity to learn more about our achievements over the past ten years with a view to joining SHASA as a member. If you'd like to get involved, new members are always welcome to assist us with our many upcoming community projects in a volunteer capacity.

If you're interested, please contact SHASA at contact.shasa@gmail.com or phone Kathryn Maxwell, SHASA President on 0467558645. Please RSVP ASAP as limited tickets are available. Please join us!





LET'S CELEBRATE

**SHASA CELEBRATES
10 YEARS ON!
2014-2024**

**MORUYA SURF CLUB
FRIDAY 1 NOVEMBER 2024
4PM-9PM**

RSVP by October 24 for catering



contact.shasa@gmail.com

Finger food provided

• Bar Service available

Live music

Presentation Ceremony 6pm



OFFICIAL OPENING OF THE MORUYA SURF LIFE SAVING CLUB BUSHFIRE + HEATWAVE HAVEN

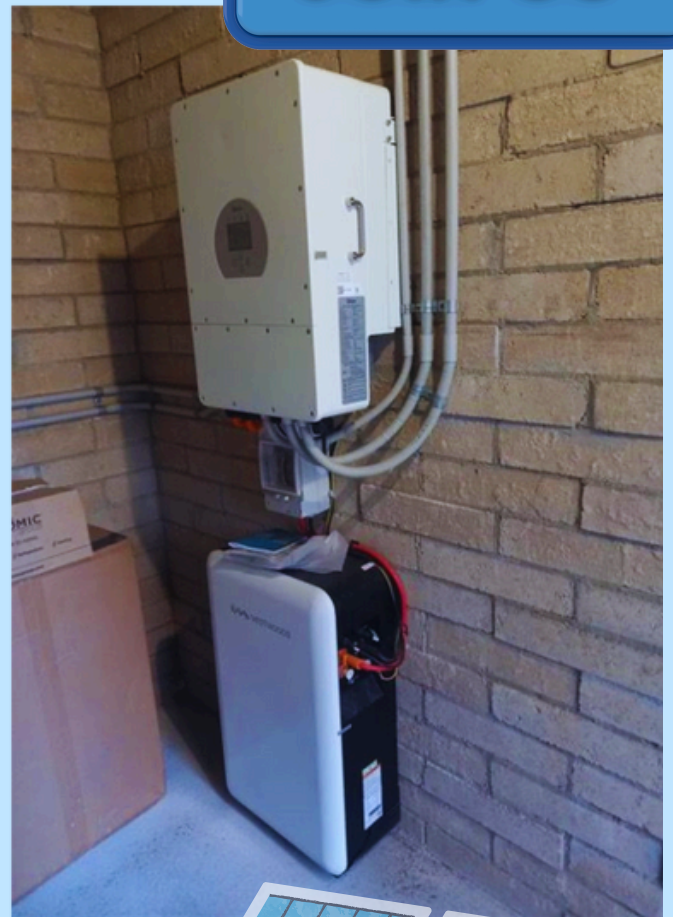


JOIN US

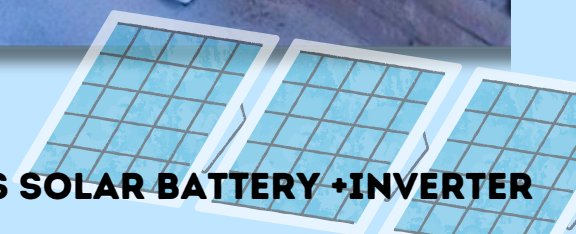
The Moruya Surf Life Saving Club Bushfire and Heatwave Haven will officially open on Tuesday 29 October at 10am.

SHASA received a grant of \$79,849 from the NSW Government's Clubgrants Category 3 Infrastructure Grants: community infrastructure. Upgrades included air conditioning, LED lighting, solar battery and emergency generator. The Haven will be officially opened by Sharon Winslade, on behalf of MP for Bega, Michael Holland.

To attend please RSVP to contact.shasa@gmail.com



**ABOVE:
THE CLUB'S SOLAR BATTERY + INVERTER**



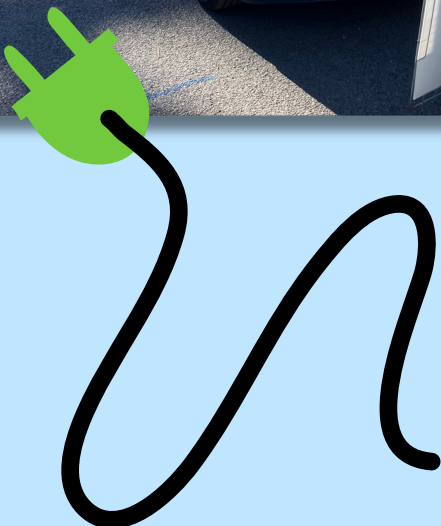
SHASA & REPOWER SHOALHAVEN MINI EV EXPO COMES TO ULLADULLA

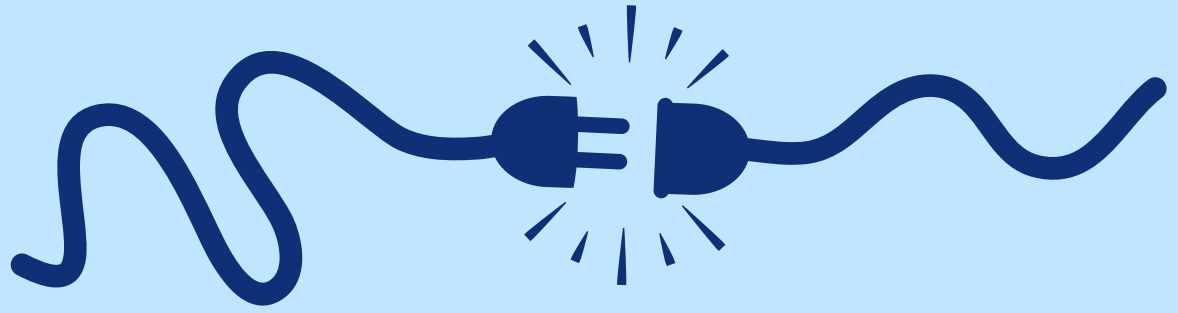
REPOWER SHOALHAVEN, in conjunction with SHASA (South Coast Health and Sustainability Alliance), is holding a mini EV Expo Day on Sunday 10th November between 8am and 1pm. Location: Ulladulla Markets at the Harbour on Wason Street, Ulladulla.

People will have the opportunity to ask questions, with no pressure to buy:

- learn about EV models available in Australia today
- talk to local owners of four EV models (Tesla Y, Hyundai Ioniq, BYD Atto 3 and MG4) plus an e-bike
- chat about EV charging and use of home solar power
- find out why battery EVs are superior to hybrids
- discuss savings and costs and the advantages of EV ownership

SEE NEXT PAGE FOR MORE DETAILS!





mini EV EXPO

Electric Vehicles & bicycle

Sunday 10th November
Ulladulla Wharf Markets

Marine Rescue (off Wason St)

8am-1pm

together with



SHASA

Southcoast Health and Sustainability Alliance

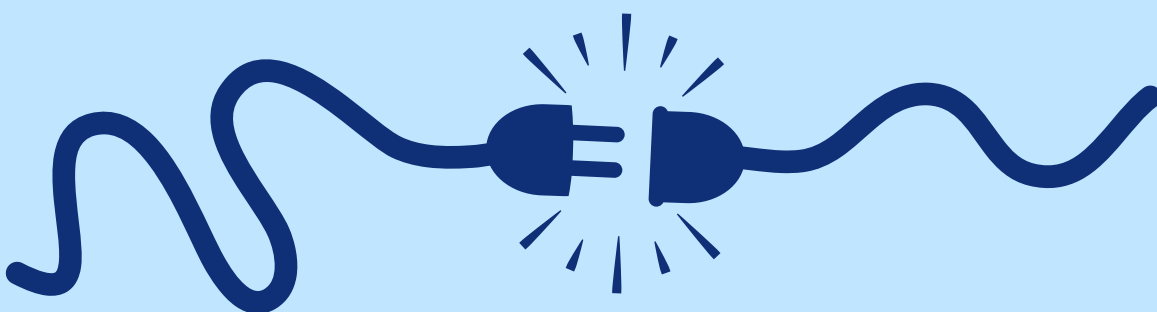
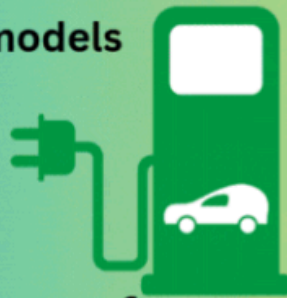
REPOWER
SHOALHAVEN
WWW.REPOWER.NET.AU

Learn about EV models
available in Australia today.

Talk with local owners of 4 EV models
& an Ebicycle.

Discuss savings and costs and
advantages of EVs.

Chat about EV charging and the use of
home solar power.



EUROBEV!

The Eurobodalla Battery Electric Vehicles Group

EUROBEV is an informal group of electric vehicle owners in Eurobodalla Shire who meet up for lunch every 6-8 weeks. We aren't exclusive – we also welcome hybrid owners. We particularly welcome people who are thinking about buying an EV. With 20 members who own a range of different makes and models, we have plenty of advice to offer. Last meeting we all enjoyed fish and chips and the view over the Tuross River at the Tuross Boatshed Cafe.

Our next gathering will be on Sunday 17 November at Foodmandu Restaurant, Batehaven. We plan to meet in the Corrigan's Beach carpark opposite Batehaven shops at 12 noon. If you're thinking of coming along, or have a question about EUROBEV or EVs generally, please email andrew.john.everard@gmail.com



Left and below: Attendees enjoy the latest EUROBEV meeting by the Tuross River



SHASA at the ESC Festival of Sustainable Choices

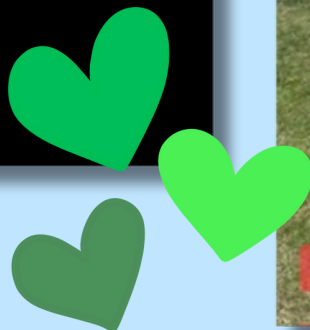
SHASA, in partnership with MESA, Repurposing for Resilience, Betta Batemans Bay, Matt's Mowing, Coastal Motors, BYD Belconnen and Volvo Canberra, held an 'ELECTRIFY' display as part of Eurobodalla Shire Council's September festival. SHASA raffled a portable induction cooktop with a frypan and provided practical information on how to save money electrifying your home. Great fun for all!



SUSTAINABLE CHOICES EXPO



WHAT A BEAUTIFUL DAY....



Photos:
Fiona Phillips MP, Facebook

SUSTAINABLE CHOICES EXPO



WHAT A BEAUTIFUL DAY....

SOUTHCOAST HEALTH & SUSTAINABILITY ALLIANCE



SHASA

SHASA

EXECUTIVE TEAM 2024-2025

PRESIDENT Kathryn Maxwell

VICE PRESIDENT Steve Colman

SECRETARY Andrea Charlton

TREASURER Patrick Guinness

COMMITTEE MEMBER Andrew Everard

COMMITTEE MEMBER Valerie Faber

COMMITTEE MEMBER Tony Lowe

COMMITTEE MEMBER Jo Maclean

COMMITTEE MEMBER Frank Ross

COMMITTEE MEMBER Arno Schaaf

COMMITTEE MEMBER Lynette Smith

COMMITTEE MEMBER Brett Stevenson

COMMITTEE MEMBER Matthew Thomas

SHASA Working Together For A Cleaner Smarter Future For The Eurobodalla

shasa.com.au

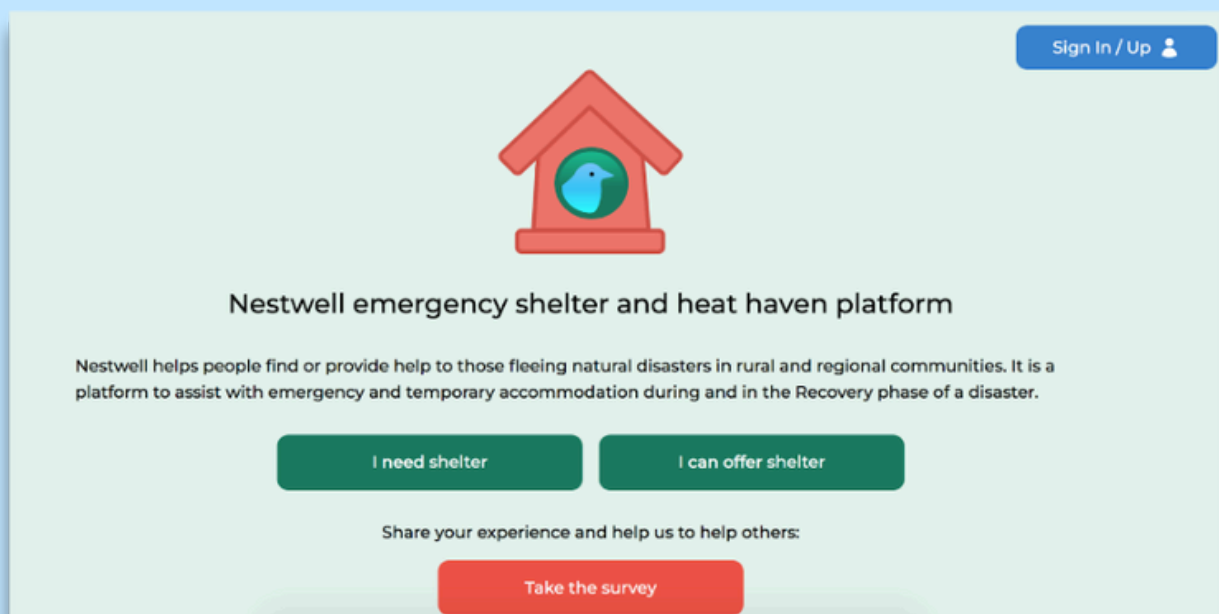
TESTERS REQUIRED FOR NESTWELL PLATFORM

Calling SHASA members and supporters to help test a working prototype for community-offered emergency accommodation and heatwave havens.

Nestwell has been funded by a grant from the National Emergency Management Agency's Preparing Australian Communities (local stream), to develop a platform where people can register for and offer various types of overnight and daytime shelter from fire, flood, heat and bushfire smoke.

The project seeks to tap into unused and under-utilised resources in the community that can be used for accommodation and shelter during natural disasters and heatwaves. These can be anything from spare rooms to caravans to sheds to empty shops to backyards for camping, and more. The aim is to take pressure off evacuation centres by building disaster preparedness and resilience within the community.

User testing sessions are conducted over Zoom for approximately 45 minutes. Nestwell will donate \$100 to SHASA for each member or supporter willing to assist with testing. To register, please email linda@littleowl.xyz or SMS 0403 300 134.



5 years on from Black Summer

Batemans Bay Heritage Museum Fire and Regeneration Exhibition planned for January. Do you have a story to tell?

The Batemans Bay Heritage Museum is planning an exhibition to highlight the impact and ongoing legacy of the 2019/20 bushfires in the Eurobodalla region. The exhibition is planned to open on January 8, 2025, and the objective is to provide an opportunity to reflect on the impact of that fire season on our community, our wildlife and our environment. The exhibition aims to create a space where we can take stock of how far we have come in terms of processing the events and managing their impact. In particular, we want to highlight the regeneration – social and environmental – that has occurred over the past five years, but also to call attention to the limits of that regeneration.

Would you like to contribute (or loan) objects, photographs and stories on the theme of Impact and Regeneration? Do you have an idea for a display or multimedia? Groups and individuals are all welcome to be part of developing the exhibition, and you're cordially invited to take part.

Please contact Sofia Eriksson via curator@batemansbayheritagemuseum.com if you would like to chat about how you could get involved, or contact Andrea Charlton at selinde2@gmail.com



Museum curator Sofia Eriksson is calling for material for an exhibition about the Black Summer fires and regeneration to be held in January 2025.

Spotlight on Bushfire + Heat Havens: Uniting Church Batemans Bay



Did you know that SHASA has won grant funding to upgrade eight community facilities (so far) in the Eurobodalla as Heatwave and Bushfire Smoke Havens? A Heatwave and Bushfire Smoke Haven is a refuge from heat and bushfire smoke that is available to members of the community. The Eurobodalla Havens are usually volunteer run, and welcome people whose homes are not adapted for extreme heat, or who need respite from heat or bushfire smoke.

As Havens are completed, SHASA will provide a detailed profile of each. Ahead of another predicted hot summer, it is important that people are aware of places in the community where they can take refuge in the event of fire, flood, bushfire smoke or heatwave scenarios.

The Uniting Church Batemans Bay has been fitted with air conditioning, a HEPA filter (air purifier), backup generator, solar panels and solar battery. When the Bureau of Meteorology declares severe or extreme heatwaves of more than three days' duration, the Haven will be open from 10am to 7pm, and can hold up to 80 people during the day. During a natural disaster, the church will be open 24 hours a day for crisis evacuation, and can accommodate up to 80 people overnight. In both scenarios, flags will be displayed out the front when the Haven is open for business. The facilities available to host visitors comfortably include:

- men's bathroom (upstairs)
- shower room (upstairs)
- washing machine and dryer (upstairs)
- women's bathroom (upstairs)
- room with kitchenette (upstairs, suitable for infant feeding)
- disabled bathroom (downstairs, toilet and shower)
- full kitchen (downstairs)

There is a stairlift to access the upstairs facilities. In addition, there is limited accommodation for pets in the small external yard. Tea, coffee and cold drinks are available, but visitors are encouraged to bring other food and things to do while in attendance. People must sign in and out of the building as they are coming or going. Located at [2 Catlin Ave Batemans Bay](#), the Uniting Church Heatwave and Bushfire Smoke Haven is open to all members of the public.

See next page for pictures

Uniting Church Batemans Bay Heatwave Haven



JOIN THE ABA FOR A PLAYDATE WITH EMERGENCY SERVICES

Protecting babies and
toddlers in emergencies

Emergency resource collection online launch

Join ABA's Bushfire Project Team
as we share our new resources for
parents and caregivers, emergency
workers and health professionals.



Thursday, 14 November
7 pm AEDT

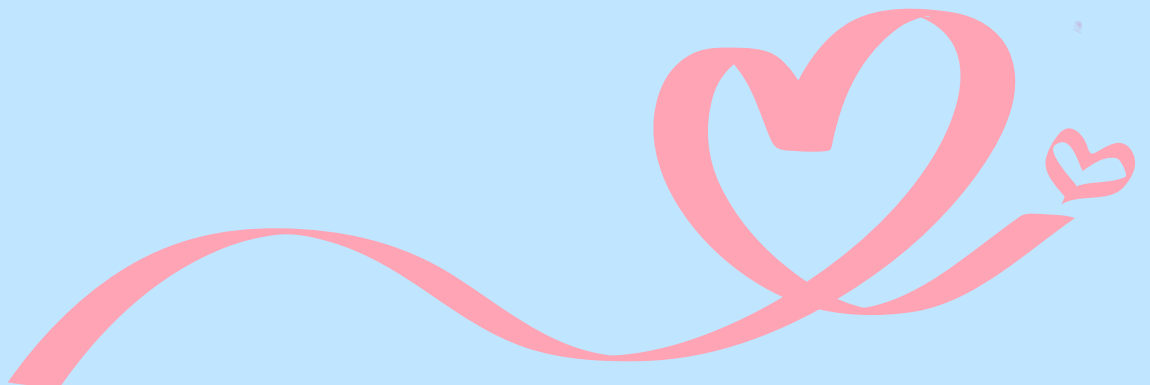
Scan the QR code to
learn more and register



Australian
Breastfeeding
Association

Free online event

aba.asn.au/emergency



Local SkyFi Satellite Internet Hubs use Starlink technology

Communities across the Eurobodalla Shire and Southern Shoalhaven are now equipped with high-speed, portable, satellite internet, significantly enhancing communication capabilities and access to online opportunities. In the wake of the devastating Black Summer fires of 2019-20, The Tec Exec, in collaboration with SHASA, provided portable internet and battery backup systems to several hubs and Heatwave Havens that experienced connectivity challenges during the crisis.

The Tec Exec, a Be Connected Network Partner for over six years and a key player in the Eurobodalla region, has been delivering digital training to regional communities. This program focuses on developing digital mentors who can support their own local communities with essential digital skills. The pilot program has engaged various groups, including St John's Commons Moruya, Narooma and Ulladulla Men's Sheds, Batemans Bay CWA Hall, and Repurposing for Resilience. Some of these community hubs have had access to this cutting-edge technology for 12 months during the pilot, allowing them to leverage internet connectivity for events, training, and emergency response.

The introduction of Starlink technology at the local hubs holds transformative potential for regional communities. Its ability to provide high-speed, reliable internet, independent of traditional ground infrastructure, makes it an invaluable tool for emergency response, community safety, and disaster recovery. As climate change leads to increasingly frequent and severe natural disasters, regional communities will rely more on innovations like Starlink to stay connected, informed, and secure during crises.

By offering a scalable and resilient solution to emergency connectivity challenges, the hubs are poised to play a critical role in safeguarding communities across regional Australia and strengthening their resilience in the face of future challenges. Read more about this project on our website

[SkyFi Hubs Eurobodalla and Shoalhaven](#)

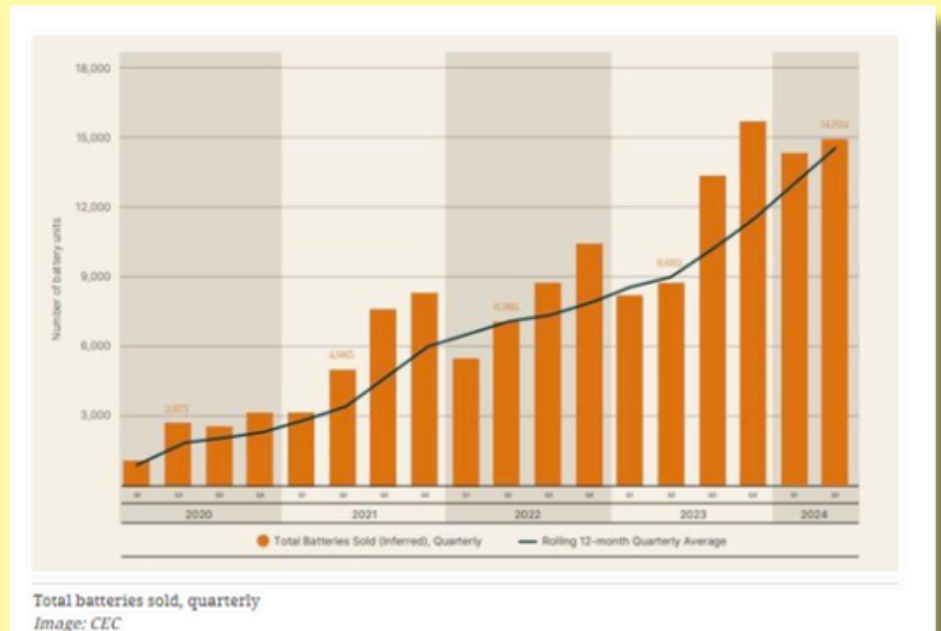
Rooftop solar + batteries update

Source: Renew Economy, October 2024

More than 3.7 million homes and small businesses now have solar panels on their roofs. It's become a staple investment and cost cutter for one in four houses Australia-wide. In 2023, nearly 340,000 households added solar panels, benefiting from lower prices for panels and batteries and motivated by spiraling prices for electricity and gas. 2024 installations are also strong and 2024 looks likely to surpass 2023. With typical payback periods of around three to four years, rooftop solar is now a recognised and simple step to take pressure off the family budget.



But more consumers are now also looking beyond generating electrons on their rooftops to storing them in home batteries for use when the sun - or the grid - goes down. Nearly 30,000 battery sales were recorded in the first half of 2024, taking the cumulative total past 140,000 and pushing the rolling 12-month quarterly average of battery sales to a record of 14,555.



Source of graphics: <https://www.pv-magazine-australia.com/>

Any used (intact) solar panels, working or not, can be given a new life at the Solar Reuse Centre at the Moruya tip. It's free, and it saves solar panels going to landfill. To learn more, visit <https://rfreurobodalla.com>.

NSW LABOR'S MESSAGE ON ELECTRIFICATION IS CRYSTAL CLEAR



The NSW government's landmark Consumer Energy Strategy sends a very clear message on fossil fuel: homes and businesses in NSW would be much better off without gas.

“Converting gas appliances to electric can save a substantial amount on energy bills, as heating and cooling appliances and hot water systems, often gas-powered, tend to be the two highest energy-drainers in a home,” the report says. “Additionally, gas products attract fixed gas supply charges. Electrification also benefits residents by avoiding health impacts for those with asthma or other respiratory illnesses.”

The National Asthma Council and the RACGP both report recent findings that cooking with gas stoves, or exposure to other gas appliances, can lead to new asthma cases and asthma exacerbations.

How does gas combustion cause asthma? Cooking with gas releases chemicals such as nitrogen dioxide and formaldehyde, which can cause inflammation in the airways and may worsen asthma symptoms.

Cooking with gas is estimated to be responsible for up to 12% of Australia's childhood asthma burden. If you can't immediately replace gas cooking, the Asthma Council suggests some ways to reduce exposure in the home.

Measures to reduce exposure:

There are a variety of simple measures you can take to reduce the effect of gas cookers on your child's asthma symptoms. These include:

- using a range hood when cooking, noting that high-efficiency range hoods which are vented outside are better than those that simply recirculate air
- opening windows during and after cooking – this is especially true if your home doesn't have a range hood
- opening windows on opposite sides of the kitchen can help remove pollutants more quickly

More detail at: www.nationalasthma.org.au

SAM FLETCHER, 350 EUROBODALLA, EUROBODALLA SHIRE COUNCIL, GOOD VIBES AND SMOKEY DAN'S PROMPTLY PRESENT

ROCK ON

FOR CLIMATE ACTION

SATURDAY 15TH FEBRUARY



SMOKEY DAN'S

SATIN CALI + ARCHIE

SAM FLETCHER + POLAROID

FEATURING LIVE MUSIC, SMOKEY DAN'S DELICIOUS MENU
AND CREATIVE DISPLAYS BY LOCAL ENVIRONMENTAL GROUPS

FROM 5PM | TOMAKIN NSW | TIX \$30⁺⁺ VIA HUMANITIX
ALL DONATIONS TO 350 EUROBODALLA WELCOME



SAGE

Food Share at REPAIR CAFE

**St John's Commons
Red Door Hall
Page Street
MORUYA**

**DO YOU HAVE ANY HOME GROWN
GOODIES OF VEGGIES, HERBS,
FRUIT OR FLOWERS YOU WOULD
LIKE TO SHARE?**

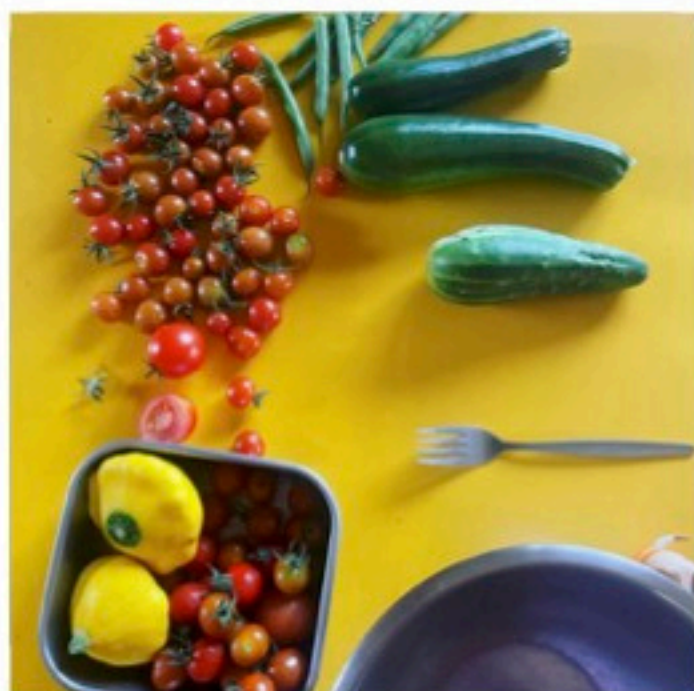
**On Friday 25 October 2024 SAGE
will be holding their monthly Food
Share Spring 2024- Winter 2025 at
the Repair Cafe in Moruya.**

**4th Friday of
the month
9.30am**

**Come along and have a
chat and join in the fun of
the SAGE food share!**

**Contact SAGE
for more information.
markets@sageproject.org.au**

HOPE YOU CAN JOIN US!



Take action to protect Moruya's Greater Gliders

Forestry Corporation NSW (FCNSW), seen as a 'rogue'* operator after multiple breaches in NSW, is poised to log a large area of Mogo State Forest between Mogendoura and northern Moruya. This forest is home to many threatened plants and animals, including the endangered Greater Glider – on a fast trajectory towards extinction, predominantly due to native forest logging, according to the NSW government's own analysis.

Logging increases bushfire risk, as 60% of the tree (crown) is left to die on the ground, providing fuel for future fires. In addition, regrowth forests, with their small-bore trees, provide fuel for more and hotter fires.

Native forest logged in the Eurobodalla is predominantly cut down for low-value export wood chips, firewood, and pallets for the Port Kembla steel mill. NSW taxpayers are paying millions to prop up this loss-making industry – \$20 M in 22/23 and \$15 M in 23/24. Rather than forcing taxpayers to fund extinctions, destroy habitat in a biodiversity crisis, and increase the risk of bushfires in a climate crisis, we could fund a just transition away from native forestry.

In our post-bushfire landscape, devastated by the Black Summer fires of 19/20 in which we lost billions of animals and plants, the worst thing we can do is to log the remaining unburnt patches of forest with FCNSW, which they claim is sustainable!

Hollow-bearing trees are critical habitat, but they make lousy building timber. The majority of building timber comes from plantations, including pine and hardwood plantations, which many other states and countries have transitioned to. SA and the ACT have been protecting their native forests for many years. WA and Victoria officially ended logging this year. NZ ended native forest logging in 2002. Australia has one of the highest mammal extinction rates in the world and the highest per capita greenhouse gas emissions of all OECD member countries. We are also the only developed nation identified as a deforestation hotspot.

-- Jo MacLean, SHASA



Pic: David Gallan, Greater Glider in Cpt 200 /Rd 4 Mogo State Forest

**As reported by ABC News (online), 24 July 2024*

Take action to protect Greater Gliders + forests (cont.)

Logging is due to start in compartments north of Moruya any time soon. Please write and contact Michael Holland on 64922056 bega@parliament.nsw.gov.au to stop this! We plan to hold Forest Embassies on the corner of Larrys Mountain Road and Princes Highway.

For more on Greater Gliders, visit www.abc.net.au/news and search for 'Greater Glider forests'.

Sign the declaration to protect our native forests:

<https://bobbrown.org.au/get-involved/native-forest-declaration/>

Check out other ways to take action at www.coastwatchers.org.au, including:

- Sun 20 Oct, 11-2pm, Picnic for Nature (500 kids on clapsticks), Ulladulla Civic Centre lawns – Nature Conservation Council (NSW). Stalls incl. Knitting Nannas (Yila Healing Event)
- Sun 20 Oct, 9am, Paddle for Climate, Kyla Park Close, Turross Head. 350 Eurobodalla, visit Rising Tide on Facebook
- Sun 3 Nov, 11-12 noon, Bob Brown Foundation Native Forest Rally, Ulladulla Civic Centre Lawns, stalls & music 11-1pm. Let's get together! Music by Jocean. Speakers include Takesa Frank, BBF Young Environmentalist of the Year and Andy Kaneider, Big Spotty Documentary Maker. The Berry Farm ice cream van will be back with Treading Lightly, Knitting Nannas, BBF merch and other stalls. To RSVP & volunteer, visit <https://rallyforforests.org>

Working together for a **cleaner, smarter future** for the Eurobodalla

