

JULY + AUGUST 2025

THE SPARK



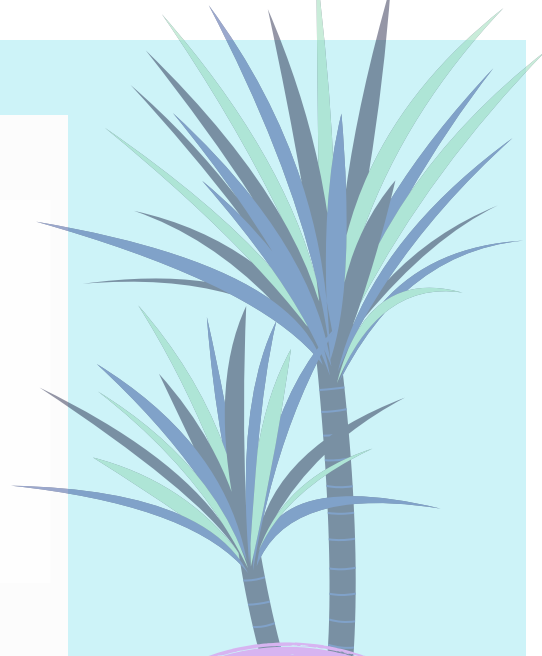
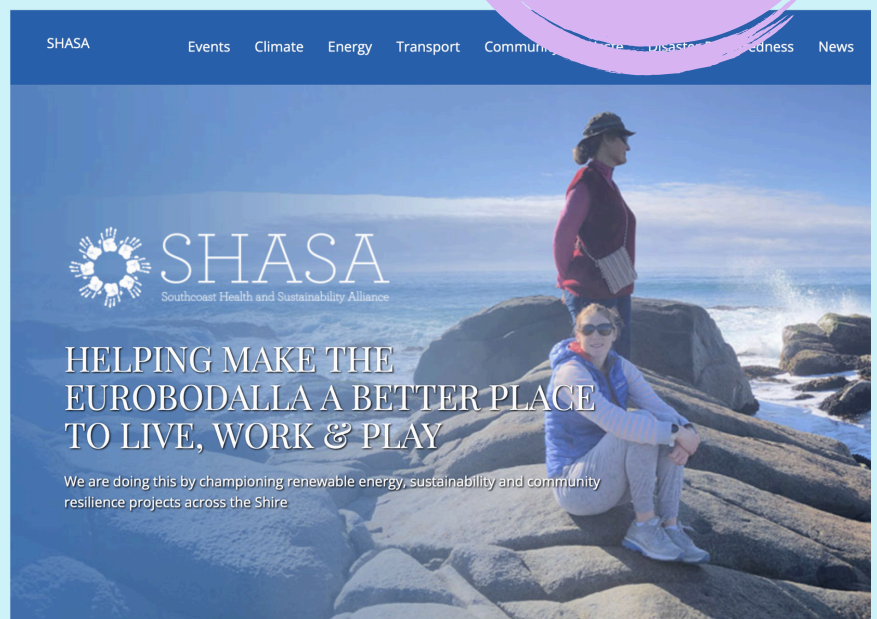
SHASA NEWSLETTER

HAVE YOUR SAY ABOUT SHASA'S WEBSITE

When was the last time you used SHASA's website? What could/should it be used for? Who should it be targeted to – prospective, new or existing members? Does it adequately reflect and promote SHASA's work?

SHASA is seeking your input to answer these questions to inform its Digital Strategy and an improved website.

With six years' worth of content on the website, we need to know – what should stay and what should go? Help us by answering a few quick questions about the current website at shasa.com.au by scanning the QR code that links to our survey:



HOME BATTERY REBATES: WHAT'S REAL, WHAT'S HYPE, WHAT'S IN IT FOR YOU?



There's been a lot of noise lately about battery rebates, and we've had quite a few calls asking what's real, what's not, and whether you need to act now or miss out.

An unfortunate outcome when the media announces government program rebates ahead of industry consultation is incorrect information and changes to program requirements as they get ironed out. In our industry, it's actually the aggregators or traders who have the final word on:

- a] interpreting the eligibility of equipment and the installation of that equipment for access to a rebate scheme
- b] setting the final value of that rebate in relation to the equipment and its installation

At the time of writing this, the aggregators have confirmed that implementation of the Cheaper Home Batteries Program requires amendments to the Renewable Energy [Electricity] Regulations 2001, and as such, technical requirements associated with the program are still being developed, despite the media's announcements.

What we do know about the scheme is it:

- will be offered nationally and cover around 30% of the upfront cost of a battery
- will now be available to both on-grid and off-grid customers
- will be available to installations with a minimum of 5kWh up to a maximum of 50kWh, and based on the useable capacity of a battery
- only batteries with listing approved by the scheme and installed by a licenced electrician accredited for battery storage with Solar Accreditation Australia will be eligible
- the battery needs to be compatible with Virtual Power Plant [VPP] interface, however inclusion in a VPP arrangement with a retailer is not mandatory
- will decrease in rebate value each year until 2030, in the same way the Federal Government's Small-scale Technology Scheme works for panels


Continued on next page

In our experience, there is no need to rush or panic buy, you do not need to grab all the toilet paper off the supermarket shelf right now to ensure your bottom line is safe [so to speak]. There are plenty of batteries to go around and plenty of time to have them installed. We recommend first determining if a home battery is feasible for you.

Warm regards,
Stephen & Lisa, Micro Energy Systems Australia (MESA)

Due to the volume of enquiries, Repurposing for Resilience Eurobodalla, Inc. will be hosting an information session at the Community Solar Reuse Centre on Saturday 26 July. Come along to learn exactly what's on offer with the battery rebate and how it can work best for you. The session will also cover electric vehicle charging. Participants are encouraged to bring along a recent copy of their energy bill and an image of their meter box/switchboard. See below for more details.

Is home battery feasible for you? How does EV charging work?
Whats on offer with the new Federal Government Battery Incentive?
Come along to have all your questions answered



**REPURPOSING
for RESILIENCE**
EUROBODALLA INC

July 26th
10.30am-12.30pm

Unpacking Home Battery Storage and EV Charging

Community Information Session

RfR Members \$5 - Non Members \$10

REGISTRATIONS ESSENTIAL
rfreurobodalla@gmail.com

RfR Community Solar Centre
21 Yarragee Rd. Moruya

Café facilities with espresso coffee available

RfR COMMUNITY WORKSHOPS 2025

rfeurobodalla@gmail.com
or call 0499 864 970
www.rfeurobodalla.com.au



WHAT?

WEAVING FROM WASTE:

Workshop transforming discarded textiles, strings and plastics into woven masterpieces. Suitable for complete beginners or seasoned weavers. BYO lunch, coffee provided.
Cost: Free

WHEN, WHERE & WHO?

1st and 3rd Saturdays of every month
10am-2pm

HAZEL HOFFMAN

UNPACKING HOME BATTERY STORAGE & EV CHARGING INFORMATION SESSION (see full details above). Please bring a recent copy of your energy bill and image of meter box/switchboard.
Cost: \$10 (RfR members), \$15 (non-members)
Cafe items available for purchase.

Saturday 26 July
10.30am-12.30pm

MESA & RfR TEAM

DON'T FLING IT, BLING IT: Repurpose e-waste materials into wearable art using jewellery techniques and your imagination. Bring something you would like to repair or repurpose. Tools & materials provided. Cost: \$65 (RfR members), \$75 (non-members). Light lunch included.

Saturday 9 August
10am-2pm

CARDOG DESIGNS

AUTOMATE: How to set up your own home automation server on a Raspberry PI using Home Assistant (for Smart Home automation).
Cost: \$40 (RfR members), \$50 (non-members)
Light morning tea included.

Saturday 6 September
9.30am-12.30pm

NICK BUCKMASTER

SHARPEST TOOL IN THE SHED: Hands on workshop in power tool basics, perfect for beginners. Learn what's what in the shop and how to use it for a practical small build project. Tools & materials provided. Cost: \$60 (RfR members), \$70 non-members. Light lunch included.

Saturday 4 October
10am-2pm

VIVIENNE WHITE

Continued on next page

RfR COMMUNITY WORKSHOPS 2025 (CONT.)

WHAT?

ALL THINGS SOLAR:

Grid connect, battery storage & off-grid power supplies – figure it all out!

Cost: \$15 (RfR members), \$20 (non-members)

Café items available to purchase

WHEN, WHERE & WHO?

Saturday 1 November

9.30am-12.30pm

MESA & RfR TEAM

FREE COMMUNITY WORKSHOPS

SUSTAINABLE KITCHENS WORKSHOP

BATEMANS BAY LIBRARY — TUESDAY 22 JULY, 2PM–3.30PM

NAROOMA LIBRARY — WEDNESDAY 30 JULY, 10.30AM–12PM

Join in this hands-on workshop creating an all-natural cleaning product.

The heart of the home is the kitchen. This is where sustainability needs to be practical. Learn how to reduce waste and embrace eco-friendly habits with simple, everyday changes. Places are limited so bookings are required. Please book early on the Eurobodalla Libraries website or contact your local library for assistance.

SUSTAINABLE SWAPS — PLANTS, TOYS AND CLOTHES

EUROBODALLA REGIONAL BOTANIC GARDEN, PRINCES HIGHWAY — SUNDAY 27 JULY, 10AM–2PM

PLANT SWAP:

To take part in the plant swap, place environmental weeds from your garden in a bag and exchange them for free native plants. You can ask our environment team about weeds in your garden, learn about alternatives, and get great tips and advice.

TOY SWAP:

A toy swap is a fun way for children to exchange toys they no longer use. It also helps to reduce waste and promote sharing. Bring along toys in excellent condition (gently used toys that are clean, undamaged, and in good working order).

CLOTHING SWAP:

Swapping is also a clever and thrifty way to refresh your wardrobe, save money, and help fight textile waste. Your pre-loved clothes will find a new home and you'll leave with 'new' second-hand items for your wardrobe. To take part in our clothing swap, bring up to five items of clothing in excellent condition. Excellent condition means the clothing is clean, pressed and free from rips, holes, strains or major faults.





SUMMARY OF...

UPCOMING EVENTS

Saturday 19 July, 10am-2pm: RfR Weaving from Waste, RfR Community Solar Reuse Centre, Moruya Transfer Station

Monday 21 July, 10am-12 noon: Be Ready Eurobodalla Tech Talk, Narooma Golf Club

Tuesday 22 July, 2pm -3.30pm: ESC Sustainable Kitchen Workshop Batemans Bay Library

Tuesday 22 July, 10am-12noon: Be Ready Eurobodalla Tech Talk, Batemans Bay Pavilions

Thursday 24 July, 10am-12noon: Be Ready Eurobodalla Tech Talk, Moruya Golf Club

Saturday 26 July, 10.30am-12.30pm: RfR information session Battery Rebate, RfR Community Solar Reuse Centre, Moruya Transfer Station

Sunday 27 July, 10am-12pm: Sustainable Swaps—plants, toys and clothes

Sunday 27 July, 12noon-2pm: SHASA EuroBEV lunch, Catalina Club, Batemans Bay

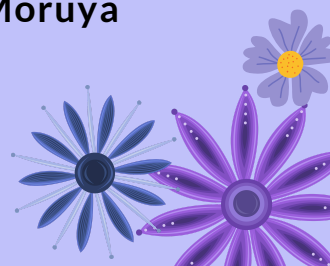
Wednesday 30 July, 10.30am-12pm: ESC Sustainable Kitchen Workshop, Narooma Library

Saturday 9 August, 10am-2pm: RfR Don't fling it, Bling it, RfR Community Solar Reuse Centre, Moruya Transfer Station

Saturday 6 September, 9.30am-12.30pm: RfR Automate (Smart Home automation), RfR Community Solar Reuse Centre, Moruya Transfer Station

Saturday 4 October, 10am-2pm: SHASA Moruya EV Mini Expo, Moruya Markets

Saturday 4 October, 10am - 2pm: Sharpest Tool in the Shed (hands-on power tool workshop), RfR Community Solar Reuse Centre, Moruya Transfer Station



BE READY – Tech Talks

- Supporting Spontaneous Volunteers
for Emergency Preparedness -

FREE

- Narooma
- Moruya
- BBay

We kindly invite you to come together and learn about

- how to help your community to stay better connected in an emergency
- Apps that could save lives
- help others to find online resources to prepare for any emergency/prolonged outage

Details...

Narooma:

Mon, 21 July – 10–12 pm, Narooma Golf Club

Batemans Bay:

Tues, 22 July – 10–12pm, Bay Pavilions

Moruya:

Thurs, 24 July – 10–12pm, Moruya Golf Club

Morning tea provided.



Book your place now...

Trish Pye

0414 442 707

admin@thetecexec.com.au

Kindly
supported by



RAINWATER TANK REBATE AVAILABLE TO BUSINESSES, SCHOOLS AND RESIDENTS

If you've been considering buying a rainwater tank, now is the time. Whether it's your first, or you're adding a new one, Eurobodalla Shire Council is offering rebates from \$200 to \$600, depending on the size, and the number of connections. Rebates are offered for tanks which are used to water the garden, and/or are plumbed to toilets and washing machines.

DETERMINING THE SIZE OF TANK

Tank size is a personal choice and will be influenced by your water usage, the size and shape of the intended tank location and your budget. For example, you may have a wide side passage, but a low eave overhanging the passage, preventing installation of a high, slim tank. Of course, you will also want to know how much water you might capture. To determine the right size rainwater tank, you'll need to consider your roof's catchment area, average rainfall, and water usage. A general rule of thumb is that each square meter of roof collects approximately 1 litre of water for every 1 millimetre of rainfall. You can then factor in your household's water consumption to estimate the tank size you need. Average rainfall in your area can be found on the Bureau of Meteorology website.

HOW MUCH WATER DOES YOUR HOUSEHOLD USE?

Average water consumption across the Shire has been calculated to be around 173L per person, per day (source: the Water Conservancy). Installing your own tank reduces your reliance on the Shire's potable water supply, while giving you peace of mind in times of drought. You can purchase tanks with inbuilt bushfire reservoirs for even greater independence.

CHECKING YOUR ELIGIBILITY, AND SUBMITTING AN APPLICATION

Please check your eligibility, and submit your application online with our rebate partner, Rebately: rebately.co/Eurobodalla

Eurobodalla Community Support Network



The Eurobodalla Community Support Network exists for individuals, community groups, service organisations and government agencies to connect, share and collaborate to increase community resilience in the Eurobodalla.

There are three ways to connect into the Network:

1. Come to a bi-monthly meeting where you get to share what's alive in your work in community, offer what you can, ask for what you need, hear from others.
2. Have a yarn with Steph the coordinator so she can be an extra pair of ears and eyes for you and your organisation.
3. Sign up and contribute to our newsletter with updates, requests, offerings and grant opportunities.

Connect with the ECSN at eurobodalla.csn@gmail.com

SHASA has been an active member of this network since it was set up after the 2019/20 bushfires to facilitate improved communication by not-for-profits, service providers and government agencies on disaster preparedness and recovery.



*Recent local meetings of the
Eurobodalla Community
Support Network*



**More information
on following page...**



INVITATION TO JOIN THE NETWORK...



Our purpose is to connect, share and collaborate to increase community resilience in the Eurobodalla

The Eurobodalla Community Support Network is for anyone who is a part of, or works with the Eurobodalla community: individuals who care about the wellbeing of community, community members, businesses, social enterprises, grassroot community groups, not-for-profit organisations, service organisations, government organisations – local, state, federal.

If this is you and you aren't currently part of the network, you are so welcome to join the ECSN.

connect

In 2025, we are moving towards:

- a network where inclusivity and diversity is continually sought
- members actively listening with curiosity, suspending judgement in conversations
- members having deepened relationships and can confidently call on each other
- members keeping their ear and eye out for each other's needs

share

In 2025, we are moving towards:

- a network where sharing is part of our DNA
- members confidently sharing and understanding power
- members growing in their capacity to ask, give, and receive
- members regularly sharing what is needed, what can be offered, what's happening, what's emerging, knowledge, skills, resources, what's in the pipeline, project ideas, leadership, responsibility, feedback

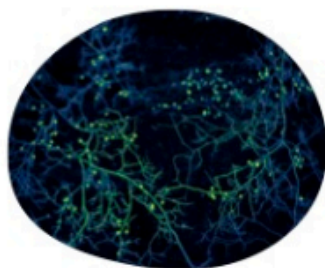
collaborate

In 2025, we are moving towards:

- a network that is confident and practices collaborating in projects, grants, conversation
- members that are confident to step in to offer what they can across organisations/entities
- members that are curious in deepening their skills to collaborate
- members that are clear in their invitation when asking others to collaborate

contact steph – eurobodalla.csn@gmail.com – 0403 235 878

how to connect into the Network



steph (the ECSN coordinator) is taking inspiration from mycelium!
"A mycelium network is a vast, underground web of thin, thread-like structures which are part of a fungus, that **connect** plants and trees together, allowing them to **exchange** nutrients, water, and even **communicate** with each other by **transferring** chemical signals through the network"

This year, steph (the coordinator) is supporting the ECSN in building and strengthening the web – more nodes to intersect at and connect into, more paths, more connections between entities, more capacity to communicate, exchange information, resources and skills

Three easy nodes/opportunities to connect into the web of the Eurobodalla Community Support Network:

have a chat with steph, coordinator of the Network

she's like another member on your team, keeping her ears and eyes out for you, relaying useful information to you and with others her job is to support build the Network pathways

come to our face to face bi-monthly gatherings

to connect and exchange with others, share what you're doing, listen, be inspired, contribute your knowledge, find collaborators for projects, topical meetings may branch off this

sign up, read, contribute, share the weekly digest

a vital path for the regular exchanging of information with a list of funding opportunities tailored to our community, meetings, requests and offerings, community events, training events

contact steph – eurobodalla.csn@gmail.com – 0403 235 878

Renewables update



NSW solar feed-in tariffs: a slight increase

While feed-in tariffs have dropped significantly in recent years, there is good news in NSW. IPART (Independent Pricing and Regulatory Tribunal) has slightly increased the NSW feed-in tariff from 4.8c to 7.3c. This is much better than Victoria, where it is nearly 0c.

Solar self-consumption is the best way for consumers to get the most value from their rooftop solar, because it reduces the amount of electricity bought from the grid. Batteries are the key to minimising exports and increasing self-consumption.

Increased interest in energy-efficient houses From: *Renew Economy*, May 25, 2025

Energy-efficient houses are a "must-have" for a growing number of buyers, commanding a premium price in markets across the country, property experts say.

The demand is reflected in real estate advertising, with half the homes currently for sale touting some sort of energy-efficient feature, according to a new report from the property website, **Domain**.

North-facing homes, double-glazed windows and solar panels are all attractive features that offer year-round comfort as well as smaller energy bills, the report says.

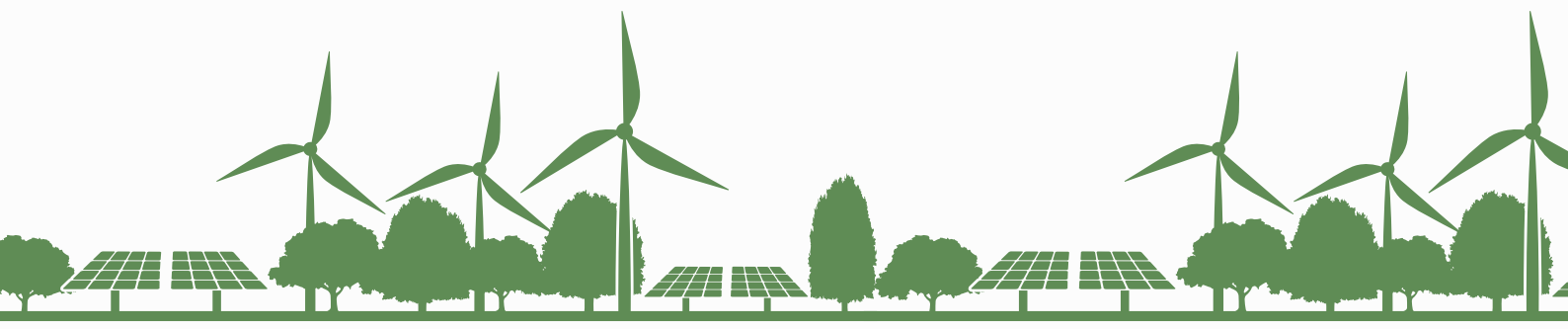
Domain's chief of research, Nicola Powell, said much of that demand is being pushed by "middle Australia", especially with energy prices set to rise for half a million homes and businesses across the country from July.

Our transition to renewable energy is changing From: *ABC Online*, May 27, 2025

The NSW Government has announced it wants to create the first "urban" renewable-energy zone in the Illawarra. NSW Energy Minister Penny Sharpe says the urban REZ will focus on rooftop solar, including on the rooftops of industry, installing home and community batteries, supporting the uptake of EVs and moulding them to be a cheap, reliable and low-emissions source of power.

"So it's not just about the individuals who can afford it, it's about stabilising the grid. It's about driving down costs, because we're not wasting any of the solar energy...so it's a pretty exciting change."

The more households that install solar and batteries, the less we need new transmission lines.



EuroBEV update

We had a successful EuroBEV lunch at Grumpy and Sweetheart's Cafe, Mogo, Sunday 1 June. Weather: glorious. Company: engaging! See the next page for the details of our next meeting.



Above: Rob Shorrock, Suzanne Shorrock, Kathryn Maxwell, Charlie Bell and George Cook enjoying their lunch.



Above: In the parking lot, with their EVs: Helen Walster (MG S5), Andrew Everard (2018 Nissan Leaf), Arno Schaaf (BYD Atto 3), Steve Young (Kia EV5), George Cook, (Chery OMODA), Peter Haughton (BYD Atto3), Charlie Bell (Kia EV3)



**HELLO EV OWNER AND
WELCOME TO
EuroBEV!**

**SHASA's
Eurobodalla Battery Electric Vehicles Group
EuroBEV is an informal group.
We have luncheons every 6- 8 weeks at chosen
venues across our beautiful Eurobodalla Shire.
The aim is to meet with fellow EV drivers and
those interested in purchasing an EV.**

**Our next luncheon will be held at the
CATALINA CLUB
154 BEACH RD
BATEMANS BAY
SUNDAY 27 JULY
12 noon**

**If you are thinking of coming along or have a question
to ask about owning or driving an EV please contact Andrew Everard.**

andrew.john.everard@gmail.com

Scan the QR Code for more information on SHASA.

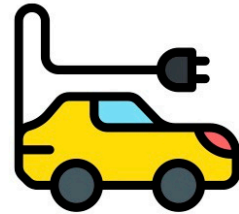
HOPE YOU CAN JOIN US !





CHECK OUT A SHASA EV MINI EXPO!

AT THE EV MINI-
EXPO IN
NAROOMA ON 22
JUNE... THERE
WERE 12 CARS,
BEAUTIFUL
WEATHER, AND
LOTS OF SERIOUS
INTEREST FROM
MARKET
VISITORS!



COME ALONG AND VISIT SHASA'S ELECTRIC VEHICLE MINI EXPO

SATURDAY 4 OCTOBER 2025

Moruya Country Markets

Riverside Park Moruya

8am- 1pm

Learn about EV models available in Australia today

Discuss savings, costs and advantages of an EV

Meet local owners with a selection of models on display

Chat about EV charging

Chat about use of home solar plus battery power



SHASA
Southcoast Health and Sustainability Alliance

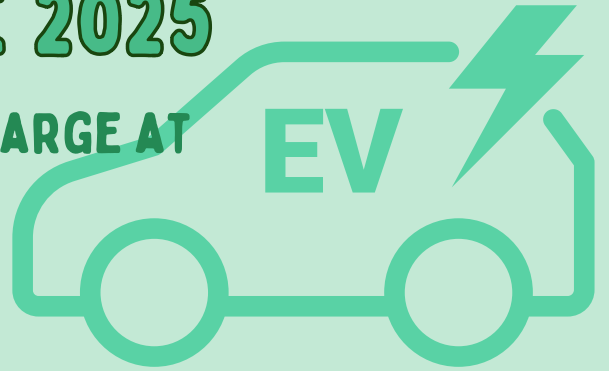


COME CHECK
OUT OUR
NEXT MINI
EXPO ON THE
OCTOBER
LONG
WEEKEND!

UPDATE: BATEMANS BAY EV FAST CHARGERS AS OF JUNE 2025

QUESTION: HOW MANY EVS CAN FAST-CHARGE AT ONCE IN THE BATEMANS BAY AREA?

ANSWER: IT DEPENDS!



We're aware of four lots of fast DC chargers in the vicinity of Batemans Bay township. They are at the Bay Pavilions (3CCS2 and 1 ChaDeMo), the Village Shopping Centre (4 CCS2), the Catalina Country Club (4 Tesla/CCS2) and Dan Murphy's Liquor Store (2 CCS2).

Where a charger has a pair of CCS2 cables, both can be plugged in at the same time, but each charging car will be able to use half of the available power, and therefore will charge more slowly than if only one is connected. Where a charger has one ChaDeMo cable and one CCS2 cable, only one car at a time can charge. The first car to plug in will charge until it stops, then the second car can begin.

So, at the Pavilions, up to three cars can charge at once, at the Village, four, Dan Murphy's two and the Country club, six. Theoretically, fifteen EVs can be charging all at the same time.

If you know of more, please let us know.

More than half of Australians wrongly believe EVs more likely to catch fire, survey shows

From: Australian Associated Press, 10 Jun 2025

More than a third of Australians believe misinformation about electric vehicles, while almost half accept the myth that battery-powered cars are more likely to catch fire, a study shows.

Researchers from the University of Queensland and three German institutions released the findings after surveys of more than 6,300 people in Australia, the US, Germany and Austria.

Their results mirrored concerns in an NRMA study that found misinformation about battery safety was preventing motorists from investing in low-emission cars.

Incorrect statements that EVs were more likely to catch fire than petrol or diesel cars gained the highest acceptance from Australians surveyed (47%), while 44% also believed EV batteries were deliberately non-upgradeable. Other claims about manufacturing outweighing the lower emissions of electric cars (35%) and EV accidents being under-reported (26%) were also concerning, the University of Queensland environmental psychologist and co-author, Dr Chris Bretter said.

"The misinformation statements we tested included that EVs are more likely to catch fire than petrol cars, do not produce emission savings and emit electromagnetic fields that damage health—all claims which are demonstrably false," Bretter said.

Participants also had their perceptions tested after a three-round conversation about electric vehicles with OpenAI's ChatGPT and after reading a US Department of Energy fact sheet debunking claims. Both interventions delivered "modest increases in pro-EV sentiment", the study found.

"Given the global need to transition toward more sustainable transport options, it is crucial we address the prevalence of misinformation about energy-efficient technologies like EVs," he said.

The findings come days after NRMA released a report, prepared by Ipsos, that found two in three Australians remained concerned about electric vehicle battery fires and safety, despite low incident reports.

DEAKIN UNIVERSITY STUDY: HOW HOUSEHOLDS AND SMALL BUSINESSES CAN BETTER USE SOLAR ENERGY



We're reaching out to you as fellow advocates for a fully electrified and sustainable future. Many of your local communities are already leading the charge—and we believe they could play a valuable role in helping to shape the future of Australia's energy system through an exciting new research initiative.

Deakin University, with funding from Energy Consumers Australia, is conducting a study titled: "The Benefits of Hyper-Utilisation of Consumer Energy Resources (CERs) through a Virtual Energy Network (VEN)". This research explores how households and small businesses can better utilise solar energy—including how those without their own solar systems can benefit from surplus solar energy generated by others through a Virtual Energy Network (VEN).

We would be grateful if you could share this opportunity with your network members and friends.

Who is eligible to participate? You need to meet at least one of the following criteria:

- be a household or small business with solar panels, looking to maximise the use of locally generated energy
- be a household or small business without solar, but interested in accessing surplus local solar energy
- have a specific energy consumer you would like to share your excess solar with (including other properties you may own)
and
- have a smart meter installed
- be an Energy Locals customer (the retail partner enabling participation in the Virtual Energy Network) or be willing to become one

This is a unique opportunity to help shape a more equitable, community-powered energy future—with practical benefits for both solar owners and those who don't yet have access to it. If any of your group or their friends are interested in participating and/or would like more information, please direct them to the Deakin Website via the QR code below. And, check out an explainer video on YouTube by searching for video titled '*The Power of Sharing: Join Australia's Virtual Energy Research*'.



– Derek White, Secretary, WinZero Inc
(Registered Charity with DGR1 Status)
Ph: 0411 703 745

MORE SOLAR PANELS, BATTERIES AND EV CHARGERS FOR BUNNINGS + OFFICEWORKS

From: *The Guardian*, 28 June 2025

Wesfarmers has secured a \$100m loan with the government's Clean Energy Finance Corporation (CEFC) to install more solar panels, batteries and EV chargers at its Bunnings and Officeworks stores.

The CEFC, with access to \$32bn of government money, is a green bank that provides financing and loans to accelerate decarbonisation.

"There is potential growth in the commercial and industrial sectors. When people see Bunnings and Officeworks doing this, it adds a ripple effect where other large companies can be influenced by seeing what these companies are doing, and seeing their car parks with EV chargers." said Chief Executive of the CEFC Ian Learmonth.

CEFC hopes the financing package at the high-profile stores would help create a "ripple effect" through the commercial sector, where the uptake of rooftop solar has been slower than across residential properties.

CEFC said the solar and battery installations could also help to stabilise the country's electricity grid. Storing solar electricity in batteries to use in evening peaks, for example, can help even out power demand at times of higher electricity use.

The financing package, to be paid back by Wesfarmers over seven years at a competitive interest rate, would help accelerate the group's decarbonisation plans, Learmonth said.



For SHASA members...

A reminder that the SHASA membership fee of \$5 is due for the 2025/26 financial year. You can join and/or renew your membership on the SHASA website @ shasa.com.au. As a member, you can attend our regular members' meetings to have your say about what's important to you, and you are covered by SHASA's insurance when involved in any of SHASA's activities—all for only \$5 per year.

Come Along And Have A Say At The SHASA Members' Zoom Meeting!



Meetings are held on a
Thursday every 6 weeks
11am-12.30pm

1



Zoom meeting - link
provided to members
who would like to attend

2



To become a member
and/or to register your
interest to attend, email
contact.shasa@gmail.com

3

A better future for
the Eurobodalla



shasa.com.au



NEXT MEETINGS
Thursday 31 July
Thursday 11 September

SHASA networking...



SHASA RECENTLY MET WITH:

- **FEDERAL LOCAL GOVERNMENT AND EMERGENCY MANAGEMENT MINISTER, KRISTY MCBAIN**
- **NEW ESC GENERAL MANAGER, MARK FERGUSON**
- **NEW ESC SUSTAINABILITY SUPERVISOR, NINA BLUEBRIDGE**
- **NATURE CONSERVATION COUNCIL CLIMATE COMMITTEE**
- **THE EUROBODALLA COMMUNITY SUPPORT NETWORK**

"AN ANALYSIS OF THE 2019-2020 BLACK SUMMER WILDFIRES SHOWED THAT THE **INTACT FORESTS NEARLY ALWAYS BURNT WITH LOWER SEVERITY THAN LOGGED AND REGENERATED FORESTS.**

IN FACT, FIRE IN INTACT FORESTS BURNING UNDER EXTREME WEATHER CONDITIONS WAS **UP TO 20% LESS SEVERE THAN IN LOGGED AND REGENERATED FORESTS** BURNING UNDER MODERATE FIRE WEATHER CONDITIONS."

Professor David Lindenmayer

LOOK OUT FOR SHASA'S NEW MARQUEE AT OUR UPCOMING EVENTS !



**A big thank you to
Fire to Flourish
Eurobodalla
for proving the
grant funding from the
Community Resource
Funding Round.**

